

Aluminum Composite Material



The Colors Make a Difference



#what'syourcolor?

RETSIS.US



ACP ALUTEC® is a fantastic material composed of two excellent aluminum sheets attached to a low-density polyethylene core with a fire-retardant (FR) material, with PVDF-Kynar paint that gives you a color life of up to 20 years, exposed to ultraviolet rays.

Alutec® is a North American company with a factory in Mexico. This has allowed us to move the panel throughout the continent, to be part

of the most important buildings, and our material is certified by **ASTM E84** and **NFPA 285** standards.

We offer you more than 44 line colors for your construction projects like houses, shops, buildings, hospitals, educational centers, industries, shopping centers, with our three brands.

For architectural market and other finishes:

Alutec® has an offer of **11 beautiful colors**, on a fantastic material to mold and give excellent durability to your facade with a thickness of **4 mm**.

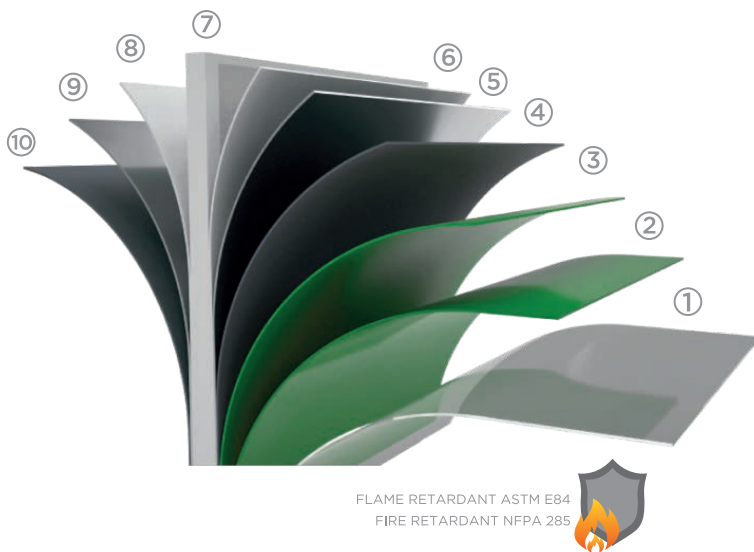
Alucomex®, has an offer of **30 colors** with a thickness of **4 mm**, with incredible textures such as wood, surprising mirror colors, electrifying sparkling colors and the elegance of marble.

For signage and other applications:

Alusign® is the brand with **4 colors**, made with polyester paint with a thickness of **3 mm**. Let your artistic side come out by printing beautiful pieces of art or developing various applications such as signage, large format advertisements, digital printing, screen printing, displays, volume shapes and everything your imagination conceives.

Find us on our WEB page and on our social networks.

Composition



FLAME RETARDANT ASTM E84
FIRE RETARDANT NFPA 285

- ① Protective film
- ② PVDF light layer
- ③ PVDF main layer
- ④ Anticorrosive paint layer
- ⑤ Aluminum layer
- ⑥ Bondeo layer
- ⑦ Mineral core - FR (flame retardant)
- ⑧ Bondeo layer
- ⑨ Subsequent aluminum layer
- ⑩ Anticorrosive layer / primer



PVDF Kynar / Warranty 20 years



WHITE **SAX**



SOFT WHITE **SWT**



SAND GRAY **SGR**



LIGHT GRAY **LGR**



CLAY **CLY**



BRONZE **BRZ**



BLACK **BLK**



DEEP BLACK **DBK**



RED **RED**



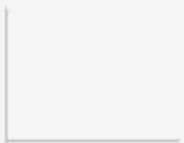
PLATINUM **PLM**



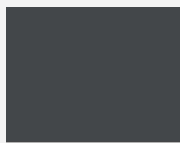
SILVER METALLIC **SMX**



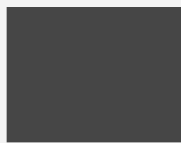
Basics / PVDF / Warranty 20 years



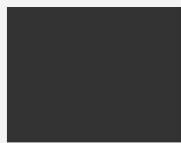
WHITE **SAX**



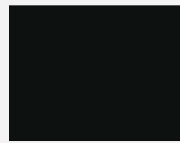
TITANIUM GRAY **GTI**



GRAPHITE GRAY **GTO**



DARK BRONZE **DBZ**



BLACK **BLK**



SAPPHIRE BLUE **SHB**



ROYAL BLUE **BRV**



LIGHT BLUE **LBL**

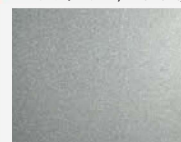


RED **RED**



ORANGE **ORG**

Metallic / PVDF / Warranty 20 years



SILVER METALLIC **SMX**



PAINTED BRUSHED **PBS**



CHAMPAGNE **CMX**

Marble / PVDF / Warranty 20 years



GRAY MARBLE **GMB**



DARK MARBLE **DMB**



NATURAL MARBLE **NMB**

Gloss / FEVE / Warranty 20 years



GLOSS RED **GRD**



GLOSS BLUE **GBE**



GLOSS BLACK **GBK**



GLOSS WHITE **GWT**

Wood / PVDF / Warranty 20 years



RED **RWD**



MAPLE **MPL**



CHOCOLATE **CHT**



WALNUT **WLT**

Mirror / Anodized / warranty 4 years



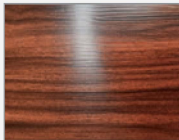
SILVER MIRROR **SMR**



GOLD MIRROR **GMR**



Embossed Wood / PVDF / Warranty 20 years



EMBOSSED RED WOOD **TRW**



EMBOSSED MAPLE WOOD **TMP**

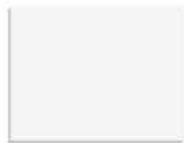


EMBOSSED CHOCOLATE WOOD **TCH**



EMBOSSED WALNUT WOOD **TWL**

Polyester Coated (PE) / Warranty 5 years



WHITE **SAX**



BLACK **BLK**



BRUSHED **BSH**



SILVER METALLIC **SMX**



Fire Retardant is available under special request.

#what'syourcolor?

Warehouse

402 Enterprise Interamerica Industrial park.
78045.Laredo, Texas.

Distributor El Paso

contact@retsis.us
Phone: +1 (303) 952 0151