



Aluminum Composite Material

With more than **10 years of experience**, Alutec® is a specialist in ACM (Aluminum Composite Material) manufacture.

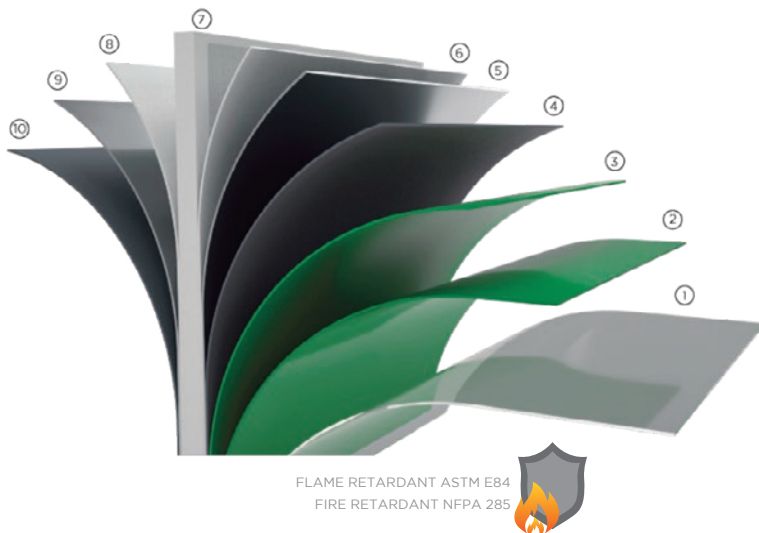
Due to its structure, Alutec® composite aluminum panels offer great versatility, adapting to any design requirement. It offers a full range of finishes, thicknesses and widths upon request and provides long durability and fast installation.

Our **Alutec®** panels are certified and guaranteed under the American Society for Testing and Materials (ASTM) international standards, have a fire retardant mineral core (FR) and are coated with Kynar® PVDF resin which guarantees the quality of the material for more than **30 years** even if exposed to UV light.

Alutec® combines high technology, functionality, cleanliness and resistance.

It is a composite material consisting of two aluminum sheets bonded to a low density polyethylene (LDPE) layer and a flame retardant mineral (FR) core which limits the production of smoke in case of fire. Additionally, its transparent PVDF layer, provides high resistance to weather and UV exposure.

Composition



FLAME RETARDANT ASTM E84
FIRE RETARDANT NFPA 285

- ① Protective film
- ② PVDF light layer
- ③ PVDF main layer
- ④ Anticorrosive paint layer
- ⑤ Aluminum layer
- ⑥ Bondeo layer
- ⑦ Mineral core - FR (flame retardant)
- ⑧ Bondeo layer
- ⑨ Subsequent aluminum layer
- ⑩ Anticorrosive layer / primer

Availability

	COLORS	CODE	PAINT FINISH	ALUMINUM THICKNESS	TOTAL THICKNESS	SIZE INCHES	WEIGHT
BASICS	Soft White	SWT	PVDF	0.50	4 mm	62"x 196"	100.42 Lbs
	Sand Gray	SGR					
	Light Gray	LGR					
	Deep black	DBK					
	Black	BLK					
	White	SAX					
	Red	RED					
	Clay	CLY					
	Platinum	PLM					
	Silver Metallic	SMX					
	Bronze	BRZ					

FIRE RETARDANT



KYNAR 500
finishes

Retsis.us

402 Enterprise Interamerica Industrial park. 78045.Laredo, Texas.

Mob. :+1 (303) 952 0151 contact@retsis.us

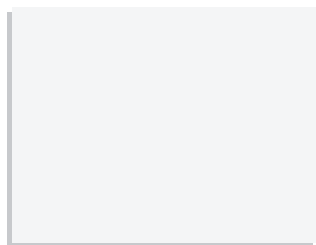


Aluminum Composite Material

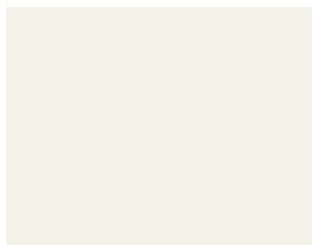
SIZE INCHES

62" x196"

PVDF Kynar / Warranty 30 years



WHITE **SAX**



SOFT WHITE **SWT**



SAND GRAY **SGR**



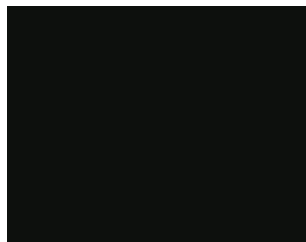
LIGHT GRAY **LGR**



CLAY **CLY**



BRONZE **BRZ**



BLACK **BLK**



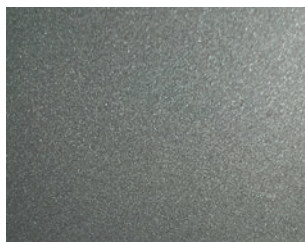
DEEP BLACK **DBK**



RED **RED**



PLATINUM **PLM**



SILVER METALLIC **SMX**

Alutec®/FR panels are available in any color option (MOQ required). Widths and special lengths are available. We adapt to your projects requirements.

Retsis.us

402 Enterprise Interamerica Industrial park. 78045.Laredo, Texas.

Mob. :+1 (303) 952 0151 contact@retsis.us